

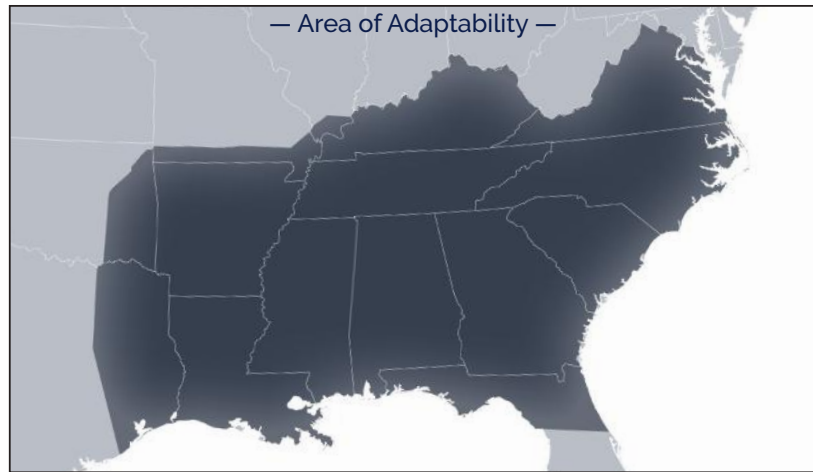
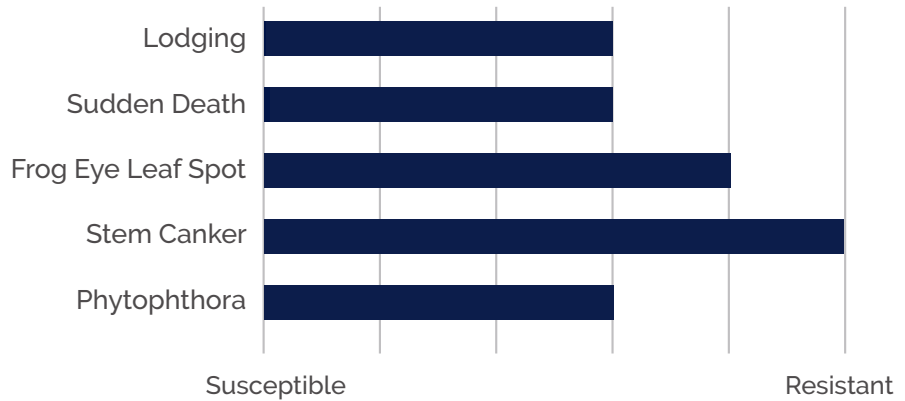


# ARMOR 55-R68

## RM: 5.6

— Trait Packages —  
**ROUNDUP READY 2 YIELD®**

Trait	RR2Y
<b>CHARACTERISTICS</b>	
Maturity	5.6
Plant Type	Determinate
Plant Height	Medium-Tall
Lodging	Moderate
Shatter	Resistant
Flower Color	Purple
Hilum Color	Black
Pubescence	Light Tawny
Pod Color	Tan
Seed Size	2500-2800
<b>DISEASE RATINGS</b>	
Phytophthora	Moderate
Phytophthora Gene	NG
Sudden Death	Moderate
Frogeye Leaf Spot	M. Resistant
Stem Canker	Resistant
Cyst Nematode	R3, MR14
Southern RKN	Susceptible
Brown Stem Rot	—
Iron Chlorosis	—
White Mold	—
<b>RESPONSE RATINGS</b>	
Chloride Tolerance	Includer



— Plant Height —  
**MEDIUM-TALL**

— Soil Type —  
**MEDIUM-HEAVY**

— Chloride Tolerance —  
**INCLUDER**

**Soybean Rating System:** There are many ways to evaluate diseases, agronomic characteristics, etc. Since many of these ratings are subjective, an explanation is listed here: **Resistant** implies no or very slight disease presence when conditions are favorable for development. **Moderately Resistant (M. Resistant)** implies slight disease presence when conditions are favorable for development. **Moderate** implies some disease presence when conditions are favorable for development. **Moderately Susceptible (M. Susceptible)** implies significant disease presence when conditions are favorable for development. **Susceptible** implies very significant disease presence when conditions are favorable for development.

These are general recommendations based on data taken from breeder, university, company trials and producer field observations and do not constitute a warranty of fitness or guarantee of performance for a particular use. • Double cropping Maturity Group IVs can be extremely risky without adequate irrigation and proper variety selection. • **Upright** implies a narrow canopy with very little branching. Intermediate implies a wider canopy with some branching. **Bushy** implies a wide canopy. **Imp. Black** = Imperfect Black. **NG** = No Gene. — = Not Available. **RR2X** = Roundup Ready 2 Xtend®. **RR2Y** = Roundup Ready 2 Yield®. **LL** = LibertyLink®. **GT** = Glyphosate Tolerant. **CONV** = Conventional.

Unauthorized propagation, seed multiplication, and/or sale, offering for sale, exchange, delivery, transfer, import, or export of seed of this variety is prohibited. Violators of the U.S. Plant Variety Protection Act (PVPA) will be subject to proceedings under federal and state law and may be liable for money damages. Seed of varieties protected or applied for under 1994 amendments to the PVPA cannot be sold for reproductive purposes without permission from the owner of this variety.

Ratings are general. Soil and environment may adversely affect performance.



PROUD MEMBER OF U.S. AGRICULTURE

